



1850 W. Oklahoma P.O. Box 368  
 Ulysses, KS 67880  
 620-356-1211 or 800-794-9302  
[www.pioneerelectric.coop](http://www.pioneerelectric.coop)

PIONEER ELECTRIC COOPERATIVE

# NEWS

## PIONEER ELECTRIC COOPERATIVE, INC.

### BOARD OF TRUSTEES

<b>Mike Brewer</b> President	<b>Alfred Alexander</b> Trustee
<b>Jeff Moyer</b> Vice President	<b>Jim Bell</b> Trustee
<b>John Jury</b> Secretary/Treasurer	<b>Charles Milburn</b> Trustee
<b>Lori Deyoe</b> Trustee	
<b>David Light</b> Trustee	

### STAFF

<b>Lindsay Campbell</b> Interim CEO
<b>Chantry Scott</b> Interim Assistant CEO and CFO
<b>Clint Meier</b> Vice President of Engineering and Operations
<b>Mike Haney</b> Vice President of Engineering and Operations
<b>Anita Wendt</b> Vice President of Energy Services
<b>Alyssa Hammond</b> Editor

## IN CASE OF AN OUTAGE

If your electricity is off for more than a few minutes, call 888-551-4140. After-hours calls will be answered by dispatch and forwarded to standby personnel.

## Pioneer's Scholarship Application Now Open

Eligible high school seniors can apply now for Pioneer Electric's 2024 scholarships. The cooperative's **GENERAL SCHOLARSHIP FUND** will award \$20,000 in scholarships to 2024 graduates.

**POWER LINE TECHNOLOGY SCHOLARSHIPS** (\$3,000) are also available to seniors considering a career in power line technology.

To apply, students must meet the following requirements:

- ▶ Attend a post-secondary education institution (in person or online) during the fall 2024 semester.
- ▶ Be a 2024 high school graduate and reside within the district of one of the following high schools:
  - ▶ Elkhart
  - ▶ Hugoton
  - ▶ Lakin
  - ▶ Moscow
  - ▶ Rolla
  - ▶ Stanton County
  - ▶ Syracuse
  - ▶ Ulysses

Students must complete the online application and provide:

- ▶ A one-page résumé stating the student's future plans, high school activities, accomplishments and honors received, community involvement and employment experience. Please do not include references.
- ▶ A seventh semester transcript (official or certified copy) from the applicant's high school submitted by mail or email.



2023 scholarship winners from left, Emily Nunez, Arabella Ashby and Lorenzo Gomez with Communications Specialist Alyssa Hammond (right).

▶ **MAIL: PIONEER ELECTRIC SCHOLARSHIP PROGRAM C/O ALYSSA HAMMOND P.O. BOX 368, ULYSSES, KS 67880**

▶ **EMAIL: AHAMMOND@PIONEERELECTRIC.COOP**

Transcripts via email will only be accepted if sent by a staff member of the student's school (counselor, office secretary or principal).

**THE DEADLINE TO APPLY FOR EITHER SCHOLARSHIP PROGRAM IS MARCH 6 AT NOON.**

Students must ensure that all materials have been submitted by the deadline in order for their application to be considered. Applications are available on Pioneer Electric's website under the community tab.

Questions regarding Pioneer Electric's scholarship program, eligibility or application may be directed to Alyssa Hammond, communications specialist, by calling 620-356-1211 or emailing [ahammond@pioneerelectric.coop](mailto:ahammond@pioneerelectric.coop).

# Notice of Proposed Rate Meeting

After reviewing the cost to provide electrical service to members and the existing retail rates, the Pioneer Electric Cooperative, Inc. Board of Trustees has authorized management to present the following rate adjustments to members. The proposed adjustments will cover operating costs, ensure reliable service and make debt service payments of the cooperative. For the impacted rate schedules, these adjustments represent an overall average increase of approximately 3%, with adjustments to the Energy Delivery Charge/Demand Charge. The increase will be effective March

1, 2024. Below is a comparison of the current and proposed customer charge schedules.

Pursuant to K.S.A. 66-104d, please take notice that the Board of Trustees of Pioneer Electric Cooperative, Inc., will meet on **FEB. 27, 2024, AT 8:30 A.M.** at the cooperative headquarters, 1850 W. Oklahoma, in Ulysses, to discuss and vote on the adoption or modification of any or all of the affected rate schedules.

If you have any questions please attend the meeting on Feb. 27, or contact at 620-356-1211 or 800-794-9302.

SINGLE PHASE (A-22)	PRESENT RATE	PROPOSED RATE
Customer Charge	\$18.40	\$18.40
Energy Delivery Charge/ Demand Charge	\$3.00	\$3.75
Energy Charge		
Summer (June-Aug.)	\$0.08	\$0.08
Other (Sept.-May)	\$0.07	\$0.07

THREE PHASE (B-22)	PRESENT RATE	PROPOSED RATE
Customer Charge	\$34.00	\$34.00
Energy Delivery Charge/ Demand Charge	\$3.00	\$3.75
Energy Charge		
Summer (June-Aug.)	\$0.08	\$0.08
Other (Sept.-May)	\$0.07	\$0.07

SINGLE PHASE ALL-ELECTRIC (A-2-22)	PRESENT RATE	PROPOSED RATE
Customer Charge	\$18.40	\$18.40
Energy Delivery Charge/ Demand Charge	\$3.00	\$3.75
Energy Charge		
Summer (June-Aug.)	\$0.08	\$0.08
Other (Sept.-May)		
First 1,100 kWh	\$0.07	\$0.07
Excess kWh	\$0.07	\$0.07

THREE PHASE ALL-ELECTRIC (A-2-22)	PRESENT RATE	PROPOSED RATE
Customer Charge	\$34.00	\$34.00
Energy Delivery Charge/ Demand Charge	\$3.00	\$3.75
Energy Charge		
Summer (June-Aug.)	\$0.08	\$0.08
Other (Sept.-May)		
First 1,100 kWh	\$0.07	\$0.07
Excess kWh	\$0.07	\$0.07

**The Board of Trustees of Pioneer Electric Cooperative, Inc., will meet on Feb. 27, 2024, at 8:30 a.m. at the cooperative headquarters to discuss and vote on the adoption or modification of any or all of the affected rate schedules.**



Ice can strain infrastructure leading to service interruptions.

# How Severe Winter Weather Impacts Reliability

When outdoor temperatures drop, our electricity use increases. We're doing more activities inside, and our heating systems are running longer and more often to counteract colder outdoor temperatures. Factor in that we all tend to use electricity at the same times — in the morning and early evenings — and that equals a lot of strain on our electric grid.

At Pioneer Electric, we work closely with our local generation and transmission provider, Sunflower Electric Power Corporation, in resource and infrastructure planning to ensure you have the power you need whenever you flip a switch, but the electric grid is much larger than your local co-op and G&T.

In winter months, when even more electricity is being used simultaneously across the country, it is possible for electricity demand to exceed supply, especially if an unexpected event like a sudden snow or ice storm or equipment malfunction occurs. If this happens, which is rare, the grid operator for our region of the country may call for rolling power outages to relieve pressure on the grid, and Pioneer Electric will inform you about the situation.

Pioneer Electric and Sunflower take proactive steps to create a resilient portion of the grid and ensure electric reliability in extreme weather, including regular system maintenance, grid modernization efforts and disaster response planning; but it takes everyone to keep the grid reliable.

To help keep the heat on for you, your family and neighbors, here are a few things you can do to relieve pressure on the grid (and save a little money along the way):

- ▶ Select the lowest comfortable thermostat setting and turn it down several degrees whenever possible. Your heating system must run longer to make up the difference between the thermostat temperature and the outdoor temperature.

- ▶ **PRO TIP:** Seal air leaks around windows and exterior doors with caulk and weatherstripping. Air leaks and drafts force your heating system to work harder than necessary.
- ▶ Stagger your use of major appliances such as dishwashers, ovens and dryers.
- ▶ **PRO TIP:** Start the dishwasher before you go to bed and use smaller countertop appliances like slow cookers and air fryers to save energy.
- ▶ Ensure that your heating system is optimized for efficiency with regular maintenance and proper insulation.
- ▶ **PRO TIP:** Make sure your furnace filter isn't clogged and dirty. Replace it as needed. Experts recommend replacing your furnace filter at least every three months or every two months if you have pets or allergies.
- ▶ When possible, use cold water to reduce water heating costs.
- ▶ **PRO TIP:** Setting your water heater thermostat to 120 degrees can help you save energy and reduce mineral buildup and corrosion in your water heater and pipes.
- ▶ Unplug devices when not in use to eliminate unnecessary energy use. Even when turned off, electronics in standby mode consume energy.
- ▶ **PRO TIP:** Plug devices into a power strip so you can turn them all off at once with the push of a button.

As we face the challenges posed by winter weather, understanding its impact on energy demand is crucial for maintaining a reliable power supply. By adopting energy conservation practices during periods of extreme cold, not only can you save money on your electric bills, but you can also contribute to the resilience of the power grid, keeping our local community warm and connected.

## SCHOLARSHIP OPPORTUNITIES!



**ATTENTION 2024  
HIGH SCHOOL SENIORS:**

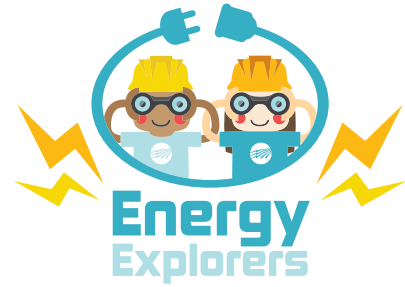
<http://www.pioneerelectric.coop>

Deadline to apply: March 6, 2024 | NOON

# WINTER Safety Word Search

Did you know most home fires happen during colder months? Play it safe this winter season.

Read the safety tips below, then find and circle the **BOLD BLUE** words in the puzzle.



A	P	I	R	P	A	J	G	F	W	D	C	Q	T	W
U	L	B	S	G	W	N	N	P	T	S	A	T	A	T
R	L	A	Y	P	J	I	U	Q	P	Q	N	G	E	O
C	T	W	R	Y	J	D	X	A	R	X	D	B	L	Z
J	F	T	P	M	K	G	C	I	B	T	L	T	C	F
X	B	K	Y	Z	S	E	M	B	Q	G	E	B	D	B
G	B	W	B	Z	H	K	T	Z	H	J	H	R	M	X
C	V	X	J	E	B	X	S	X	B	Q	C	K	V	A
V	I	M	A	B	O	K	A	T	C	S	I	K	F	E
X	Y	T	Q	Y	K	J	S	F	N	Q	V	T	J	W
L	E	V	J	A	N	V	U	W	C	B	A	P	A	W
R	T	R	E	L	E	C	T	R	O	N	I	C	S	O
W	Z	B	K	R	Y	X	S	B	V	A	Q	O	U	E
S	D	R	O	C	N	O	I	S	N	E	T	X	E	P
I	F	J	R	W	K	J	B	Q	P	U	B	D	T	Z



- ▶ Never overload electrical outlets with too many **ELECTRONICS**.
- ▶ Test smoke and carbon monoxide **ALARMS** every month.
- ▶ Never leave a **CANDLE** burning in an empty room.
- ▶ Keep flammable items at least 3 feet away from a **SPACE HEATER**.
- ▶ **EXTENSION CORDS** should only be used temporarily. Damaged or frayed cords should be thrown away.