



1850 W. Oklahoma, P.O. Box 368
Ulysses, KS 67880
620-356-1211 or 800-794-9302
www.pioneerelectric.coop

**PIONEER ELECTRIC
COOPERATIVE**

NEWS

Pioneer Electric Cooperative, Inc.

Board of Trustees

Martie Floyd – President

Alfred Alexander – Vice President

John Jury – Secretary/Treasurer

Steve Arnold – Trustee

Mike Brewer – Trustee

Fred Claassen – Trustee

Jeff Moyer – Trustee

Jim Bell – Trustee

Charles Milburn – Trustee

Staff

Steve Epperson – CEO

Lindsay Campbell – Executive Vice
President, Assistant CEO and General Counsel

Chantry Scott – Executive Vice President
and CFO

George Bushnell – Vice President
of Engineering and Operations

Anita Wendt – Vice President
of Energy Services

Alyssa Hammond – Editor

In Case of an Outage

If your electricity is off for more than a few minutes, call 888-551-4140. After-hours calls will be answered by dispatch and forwarded to standby personnel.

Pioneer Electric's Area Roundup

You can have a positive impact on your community simply by rounding up your energy bill each month. Pioneer Electric's Area Roundup (PEAR) program helps you turn small change into opportunities that aid others when they need it most.

The simple act of turning on a light is something most of us take for granted every day. Members of Pioneer Electric have the option to turn that flick of a switch into funds that support individuals and organizations in need by making the choice to enroll in the PEAR program.

PEAR Overview

The PEAR program is an approved 501 (c)(3) not-for-profit foundation that allows members to make a tax-deductible contribution through their monthly energy bill. To participate, members must enroll or opt-in to the program. Members who enroll in PEAR voluntarily choose to have their monthly bill rounded up to the next highest dollar amount. The extra amount generated is the amount of your monthly donation.

Funds generated from members' contributions are used locally and available to members within Grant, Hamilton, Haskell, Kearny, Morton, Stanton, Stevens and Finney counties.

Members' Contributions

When members enroll in PEAR, they sign up to make a voluntary contribution each month by having their monthly electric bill rounded up to the

next highest dollar amount. On average, a member's contribution is around \$6 a year. Monthly contributions can be as little as a penny but never more than 99 cents.

To enroll in PEAR, members can fill out the application to round up their bill online at www.pioneerelectric.coop or by visiting our office.

Small Change, Big Impact

Funds from our PEAR program can be requested for a variety of reasons including education, health, safety, charitable purposes. These can include emergency medical expenses, recovery after a house fire or other disaster, literacy programs, hospice programs and more.

Applying for Funds

To receive funds, an individual or tax-exempt organization must submit an application. A board, comprising of five southwest Kansas residents, reviews each application, and funds are distributed according to the financial need outlined in the application. Applications are available at our office or available to print from our website.

Members interested in enrolling in PEAR or who have a financial need that PEAR can accommodate can request more information about the program at our office located or on our website. Members can also contact Sheila Mason, PEAR Secretary/Treasurer, by emailing sheila.mason@pioneerelectric.coop or calling 620-356-1211.

Pioneer Electric Proposes Storm Recovery Charge

After a review of the financial costs associated with February's Polar Vortex (Winter Storm Uri), Pioneer Electric's Board of Trustees directed the cooperative's management to present a distribution billing adjustment to members. The adjustment will cover costs accumulated by Pioneer Electric during Winter Storm Uri.

During the week of Feb. 15, many utilities experienced an increased energy demand coupled with severe constraints on available generation resources. These factors caused wholesale power costs to rise drastically.

Pioneer Electric experienced a \$17-20 million addition to its February power bill after extremely cold temperatures caused a surge in demand for energy resources across the entire Midwest.

To manage the impact that higher bills may have on members, Pioneer Electric's proposed adjustment will amortize (spread out) the cost to members over 36 months. Members will also have the option to pay their total storm recovery charge in one payment at any point once implemented on bills.

The new billing adjustment will be reflected in the "FEB.

2021 STORM RECOVERY CHARGE" on their bills. This charge will be in addition to members' normal monthly bills and reflect members' individual usage from February 1-28. Current estimates predict that the average member's charge will be approximately \$8 per month (based on usage of 1,000 kWh for the month of February). Members who used more or less than 1,000 kWh will have that reflected in their charge.

Any credit or additional expense toward the February event will be allocated to all members and reflected on subsequent bills. "We understand members may have concerns regarding their upcoming electric bills," said Steve Epperson, Pioneer Electric's CEO. "Our plan to amortize these costs over 36 months will help us stand between our members and high electric bills."

Members' February usage can be found on the back of their March bills or through the SmartHub app. Members with questions or concerns may contact Pioneer Electric by calling our office at 620-356-1211 during regular business hours (Monday-Friday, 8 a.m. to 5 p.m.).

Figuring your Feb. 2021 Storm Recovery Charge

Pioneer Electric has proposed a 36-month recovery period to manage costs associated with Winter Storm Uri on members' monthly bills. **THESE NUMBERS ARE ESTIMATES AND MAY NOT BE REFLECTIVE OF YOUR PERSONAL USAGE AND ARE PENDING BOARD APPROVAL.** Find your February usage on your bill or by logging into SmartHub.

1. Figure your total additional cost for the energy you used in February.

$$1,000 \text{ kWh} \times \$0.284^* = \$284.00$$

Energy consumed in February 2021 Add'l. cost per kWh in Feb. 2021 Total add'l. cost in Feb. 2021

2. Figure your monthly storm recovery charge.

$$\$284.00 \div 36 \text{ months} = \$7.89 / \text{month for 36 months}^{**}$$

Total add'l. cost in Feb. 2021 Pioneer Electric's proposed recovery period Your monthly Feb. 2021 Storm Recovery Chg.
**in addition to your regular monthly bill

**Values expressed within this example are approximations based upon initial estimates of \$0.284 per kWh and a usage of 1,000 kWh for the month of February 2021.*

Come on in!



ELECTRIC SAFETY

and Your Cooperative

Safety is part of our cooperative culture. Practicing, promoting and demonstrating electrical safety helps our employees and the communities we serve work and live safely.

1,000,000 HOURS OF SAFETY

Pioneer Electric has over **1 MILLION HOURS OF SAFETY** without a lost time accident. Our safety hours allow us to continue providing our members with reliable energy at the lowest cost possible.

Work Safe. Stay Alive.



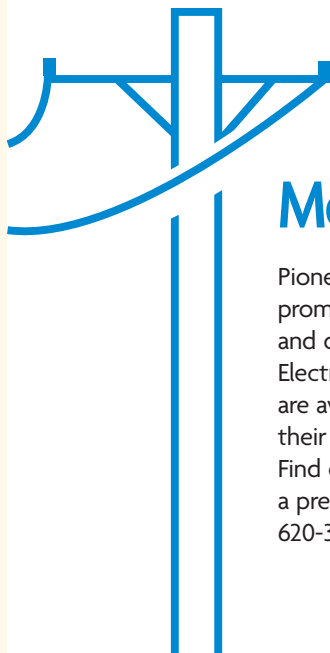
95% of all electricity-related accidents can be prevented by working safely and wearing the right protection.



Water, iron, aluminum and even your body are conductors of electricity, meaning electricity can flow through it.



Replace Cords, plugs and tools that are worn out or have exposed wires. Damage to these items can increase the chance of getting shocked.



More Questions?

Pioneer Electric believes in promoting electric safety inside and outside of our building. Electrical safety demonstrations are available to members at their school, event or business. Find out more or arrange for a presentation by calling us at 620-356-1211.

More information about electric safety and our safety demonstrations is available at www.pioneerelectric.coop.

Pioneer Electric Scholarship

2021

meet the winners



KERRY HITTLE PHOTOGRAPHY

MOLLY MCCLURE
Hugoton | \$2,000



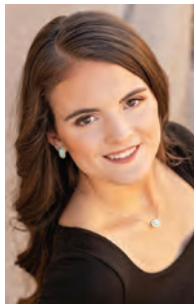
FLO BRETZ PHOTOGRAPHY

MIA ROCK
Ulysses | \$2,000



APRIL HARMON PHOTOGRAPHY

GRACE STAATS GIBSON
Hugoton | \$1,500



APRIL HARMON PHOTOGRAPHY

JORDYN TUCKER
Stanton Co. | \$1,500



SENIORS BY PHOTOJEANIE

HAILEY TRAHERN
Ulysses | \$1,500



NATALIE PFEIFER

C.J. RAINES
Ulysses | \$1,500



EDEN FLOKA GRACE PHOTOGRAPHY

EIRLAND AKERS
Elkhart | \$1,000



KYNNA CRAWFORD
Hugoton | \$1,000



ROLLA HIGH SCHOOL YEARBOOK CLASS

ASPEN SOHM
Rolla | \$1,000



APRIL HARMON PHOTOGRAPHY

PEYTON PETERSON
Stanton Co. | \$1,000



MICHELLE HANES

SHAYBREE HANES
Elkhart | \$1,000



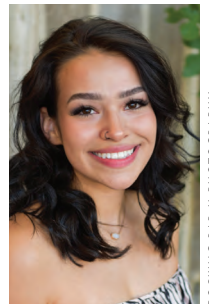
RONDA LANGLEY

AUDRA LANGLEY
Rolla | \$1,000



KERRY HITTLE PHOTOGRAPHY

RIGGS MARTIN
Hugoton | \$1,000



ROCKING BAR H PHOTOGRAPHY

BIANCA BULTMAN
Elkhart | \$1,000



MALLORY HORTON

ETHAN HORTON
Lakin | \$1,000



SHANNON RACHEL PHOTOGRAPHY

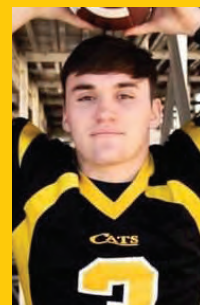
DAVEN LUERA
Elkhart | \$1,000

POWER LINE TECHNOLOGY



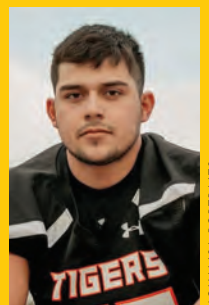
ABBY HURTADO

AARON FIERRO
Ulysses | \$1,000



FLA SHBACK IMAGES

ISAAC CLIFFT
Moscow | \$1,000



MONALISA PORTRAITS

MOISES RODRIGUEZ
Ulysses | \$1,000