



Your Touchstone Energy[®] Cooperative 

1850 W. Oklahoma, P.O. Box 368
Ulysses, KS 67880
620-356-1211 or 800-794-9302
www.pioneerelectric.coop

**PIONEER ELECTRIC
COOPERATIVE**

NEWS

Pioneer Electric Cooperative, Inc.

Board of Trustees

- Martie Floyd** – President
- Alfred Alexander** – Vice President
- John Jury** – Secretary/Treasurer
- Jim Bell** – Trustee
- Mike Brewer** – Trustee
- Fred Claassen** – Trustee
- Charles Milburn** – Trustee
- Jeff Moyer** – Trustee
- Melvin Winger** – Trustee

Staff

- Steve Epperson** – CEO
- Randy Magnison** – Executive Vice President, Assistant CEO
- Lindsay Campbell** – Executive Vice President and General Counsel
- George Bushnell** – Vice President of Engineering and Operations
- Chantry Scott** – Vice President of Finance and Accounting
- Anita Wendt** – Vice President of Energy Services
- Drew Waechter** – Editor

In Case of an Outage

If your electricity is off for more than a few minutes, call 888-551-4140. After-hours calls will be answered by dispatch and forwarded to standby personnel.

Love Thy Member: The Co-op Relationship

Valentine's Day is a celebration of relationships. Romantic or not, strong relationships are vital to us all. They give us meaning and help in growing us into what we are. For Pioneer Electric, it is the relationship we share with our members that we truly treasure. While we may not express it in a card or chocolates, we strive to showcase our respect and care for those we serve through committed service.

A relationship with your cooperative is one based upon the trust of affordability and safety. Like any relationship, it requires commitments from both parties involved; members and cooperative staff must work collaboratively. This is the core of what makes cooperatives such a unique business model. It is one formed through the relationship we share.

We enter now into the season of our Annual Meeting. It is a time in which the need for collaboration between member-owners and the cooperative is strongest felt. The efforts of the cooperative staff and board, for the

work completed in the previous year, is proudly reviewed with the greater membership. Financials are discussed, upcoming projects are reviewed, political updates are shared and the current state of Pioneer Electric is looked at. Serving to build support between staff and member-owners, both working to ensure that the cooperative is on the proper course.

For member-owners, this is a time in which they are able to exercise their democratic control. Their feedback is collected through votes made for leadership representation, questions asked and open discussion. This is then shaped into positive action and implemented into forward movement.

We encourage our members to take this year as an opportunity to look at the relationship they hold with their cooperative. Open communication and continued commitment is vital to ensuring that we are and are meeting the needs and expectations set for us by the communities, families, farms and businesses that make our cooperative.

Member Notice!

The February 19 meeting of our cooperative board of trustees will be held at Southern Pioneer Electric's Liberal office location (1490 General Welch Blvd., Liberal, KS).

Southern Pioneer Electric is a wholly-owned subsidiary of Pioneer Electric Cooperative and members may direct any questions to 620-356-1211.

Pioneer Electric Proposes Bylaw Amendments

Pioneer Electric's board of trustees approved the proposal of multiple amendments to Pioneer's bylaws. These amendments were discussed during the December 2019 meeting of the cooperative board of trustees and will be voted upon by members at the Annual Membership Meeting on March 14, 2020. Members will have the opportunity to review the changes by visiting the co-op's website (pioneerelectric.coop) and in their formal notice for the Annual Meeting.

A Look at the process:

Navigating the implementation and creation of bylaw amendments is a look into the relationship between Pioneer Electric employees, board and member-owners. Each plays their role in the process, ensuring the health and protection of Pioneer Electric.

Cooperative board members take careful consideration when looking at any proposed changes to cooperative bylaws. They discuss the bylaws, ask for counsel from cooperative senior staff and evaluate the current standing of the cooperative. Together, the board agrees and votes on any changes they feel best serves the cooperative and proposals are then passed along for consideration to the members.

It is the members' responsibility to approve of amendments, repeals and changes regarding our bylaws. This serves as a protection of the cooperative, its member-owners, staff and board. Each member is allotted one vote and the power to raise their voice in support or opposition of the proposed amendments. For Pioneer Electric, proposed amendments are discussed and voted upon during the Annual membership meeting.

Members unable to make the meeting will have the opportunity to vote by assigning a proxy. The proxy will serve in casting a ballot on the behalf of the member. However, this may be revoked in the following circumstances:

- ▶ The member chooses to attend the meeting after filling out their proxy. The member will be entitled to vote at such meeting in the same manner and with the same effect as if they had not executed the proxy.
- ▶ If the proxy is no longer valid (60 days after its execution)
 - A proxy to be executed by either the husband or wife or a joint membership. However, presence of either at the meeting of the members shall revoke the proxy (executed by either of them) and the joint members will be entitled to a vote as if the proxy was not executed.

Votes are then counted and the results are announced to members. Any approved proposals will then be adapted into Pioneer's Bylaws and immediately go into effect. Pioneer Electric employees and board members will then be tasked in upholding the new changes. From there, the cycle then continues and new needs and adjustments are brought to the attention of board members and staff.

Amendment Summary

Certificate of Memberships:

Cooperative board proposes the removal of reference to "membership certificates" within the cooperative bylaws. Under the current bylaws, new members receive a signed certificate of membership from the cooperative board of trustees upon starting their service. The proposed changes would remove the requirement of the cooperative to distribute these certificates and all required policy surrounding them.

Why the change?: Removal of the certificate of membership will have no effect on the membership status of new and current members. The change will provide cooperative staff the flexibility to streamline new membership registration and no longer dedicate time to the maintenance and update of these certificates.

Annual Membership Meeting Date Requirements:

The proposed change will remove the requirement of the Annual Membership Meeting of Pioneer Electric to be held solely during February or March. This proposal will extend the allotted date for the meeting to any time between February 1 and October 31 of a given year.

Why the change?: Annual Meetings are vital to the cooperative business model. They provide the opportunity form members to conduct vital business. The change will allow the cooperative more time in which to host the Annual Membership Meeting. This allows the cooperative room if ever the need to reschedule or adjust the timing of the meeting.

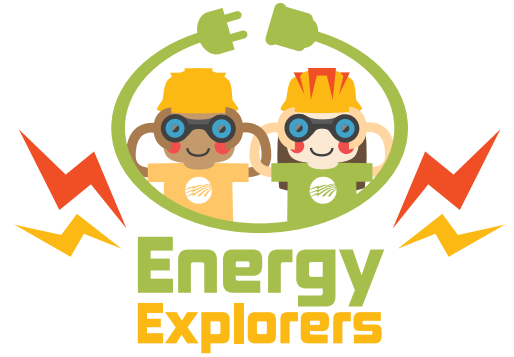
Board of Trustee Qualifications and Nomination:

Finally, the cooperative has proposed amendments to qualification requirements for those wishing to serve on Pioneer's board of trustees and regarding nominations made from the floor during the Annual Membership Meeting.

Why the change?: The hope is that the new changes will provide added clarity in regards to qualifications, help in the protection of the cooperative and its members and ensure that those nominated are best able to represent the greater membership. The proposals also remove the opportunity for nominations to be made for the board from the floor of the Annual Membership Meeting.

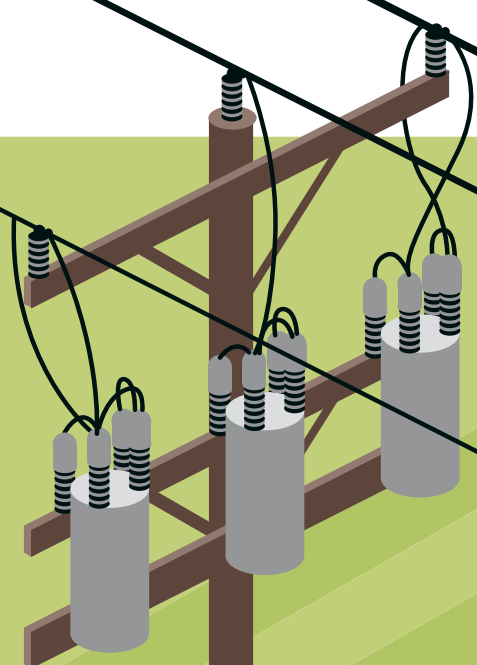
ELECTRICAL EQUIPMENT WORD SCRAMBLE

Electric co-ops use a variety of equipment to make sure you and your family receive reliable electricity. Can you unscramble the equipment terms below?



Use the provided clues for help,
and double check your work in the
answer key below.

- ORNSTAMREFR**
These can look like large metal cans on top of utility poles or big green boxes on the ground. They are used to reduce the voltage of electricity, making it safe for use in your home.
- OERPW NSLIE**
These can hang overhead or be placed underground. They carry electricity from where it's generated to homes and businesses in your community.
- OUTASBSNTI**
This is an electrical facility that contains equipment for controlling the flow of electricity.
- RCTLECIE ERMTE**
These devices are typically found outside the home and measure the amount of electricity you use.
- CBUTKE KTURC**
Lineworkers use these types of vehicles to reach power lines and poles when making repairs and updates to the electrical system.



Answer Key: 1. TRANSFORMER 2. POWER LINES 3. SUBSTATION
4. ELECTRIC METER 5. BUCKET TRUCK



MEET YOUR COOPERATIVE EMPLOYEES!

⚡ People that power Pioneer ⚡

MARK SHOGREN

MNGR. OF PURCHASING, MATERIALS & FACILITIES

An EMT, volunteer firefighter and now a cooperative employee; Mark Shogren has had a long history of service to community. We had the opportunity to chat with Mark about what it means to work through servant leadership and how that fits into Pioneer Electric.

"I was actually off of the force by then. My oldest daughter was just learning how to drive and we were headed off to visit my parents for the weekend. We approached an intersection and I told my daughter 'step on the breaks'. We both watched as a pickup pulled out and t-boned an oncoming car. Both ended up in the ditch and I told my daughter to pull over and park. We called 911 and I went out to check on the drivers.

One was out walking next to their vehicle and said he was okay. I then went over and checked the other vehicle. He was still in it and seemed to be dazed. I asked how he was doing and he'd mentioned hitting his head. That's when my training just kicked in. I crawled through the back of the vehicle and started supporting his neck and got a blanket to keep him from going into shock.

An ambulance soon arrived and I told the responders that I used to be an EMT and what I had done. Together, we worked to get the man out of vehicle and into the ambulance. Afterwards, I went back into my car and my wife is just shaking her head and she said, "You just loved that, didn't you?"

For Mark Shogren, Manager of Purchasing, Materials and Facilities, there is

never an excuse to not help a person in need. At the cooperative, his time is spent between the coordination and management of the cooperative's warehouse. Albeit behind the scenes, his department spends each day working to help ensure supplies are ordered, the office is maintained and that others are provided the resources necessary to do their job.

Before his time at Pioneer, Shogren split his time between his career as a salesman for an electrical supply company and volunteering his nights and weekends as a first responder and firefighter for the Solomon community. He took classes in the evening to earn his EMT certification and formed a camaraderie with those that also volunteered.

"I just always wanted to help out and couldn't stand to see folks in trouble or pain," said Shogren. "I guess that is why I was so drawn to it (volunteering). I went into burning buildings, helped out at accidents and my wife didn't want to know anything about it. I guess to me, it (volunteering) felt like something that someone needed to do and I did it."

Job opportunities saw his family moving to Liberal, KS. However, promotions and transfers saw Shogren working out of Emporia while his family remained



Shogren proudly displays his emergency medical technician certificate and patch from his time as volunteer EMT.

in western Kansas. However, an opportunity for a job at Pioneer Electric arrived and he has since been with the cooperative.

Shogren no longer volunteers his time but that doesn't mean he doesn't apply the lessons learned through volunteering.

"When you volunteer, you're putting others before yourself," said Shogren. "Pioneer really pushes employees to act as servant leaders and if you look at how the business is shaped, it makes sense. We're about helping others and not making a profit."