

Safely plant trees near power lines.

Trees beautify our neighborhoods and when planted in the right spot, can even help lower energy bills. However, with the wrong tree in the wrong place, that effort can lead to dangers, especially around power lines. Also remember to be safe and always call 811 to locate underground utility lines before you dig.



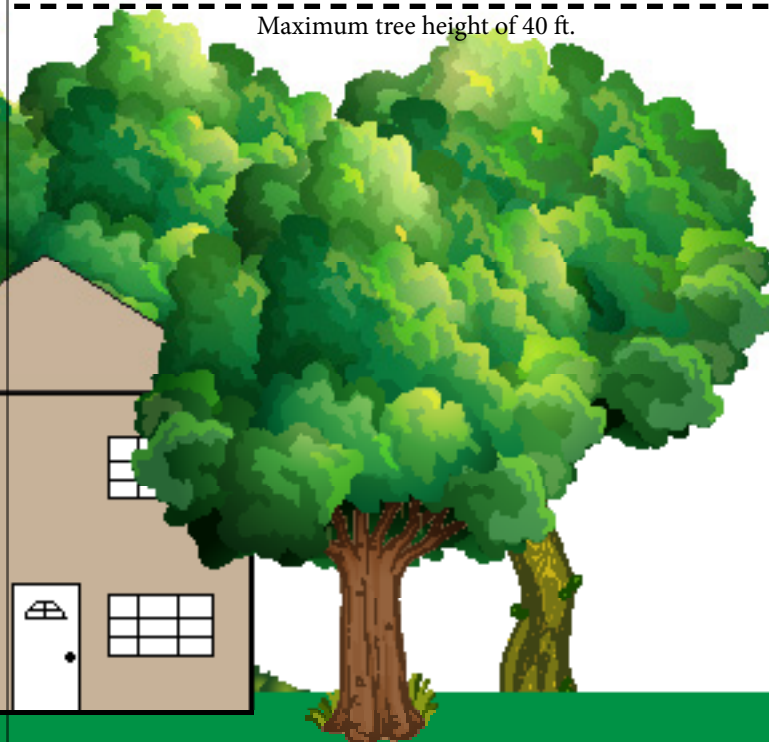
LARGE TREES

Height/spread of more than 40 ft.



MEDIUM TREES

Height/spread of no more than 25 to 40 ft.

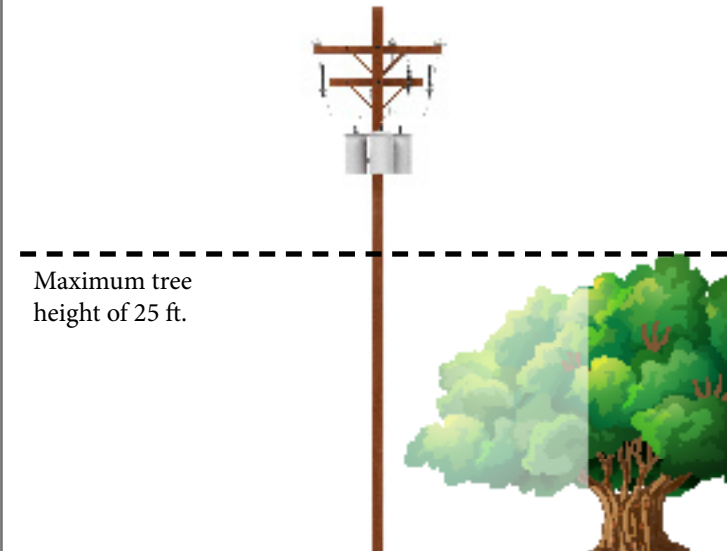


Maximum tree height of 40 ft.

SMALL TREES

Avoid planting trees with 20 ft. of power lines. When unavoidable, use only shrubs, small trees or garden variety.

Height/spread of no more than 25 ft.



Maximum tree height of 25 ft.

50 ft.

20 ft.